

## Program Coordinators



**Assoc. Prof.  
Dr. Alain Jacquet, PhD**

Division of Allergy and Clinical Immunology,  
Recombinant vaccine unit,  
Department of Medicine, Faculty of Medicine,  
Chulalongkorn University  
Email: [Alain.J@chula.ac.th](mailto:Alain.J@chula.ac.th)



**Asst. Prof.  
Dr. Kanitha Patarakul, MD, PhD**

Department of Microbiology,  
Faculty of Medicine, Chulalongkorn University  
Email: [kpatarakul@gmail.com](mailto:kpatarakul@gmail.com)

## Enrollment Fee

<b>Full registration</b> (Lecture+Lab):	<b>10,000 Baht</b>
<b>Early bird</b> (until 31 August 2013):	<b>8,000 Baht</b>
<b>Lectures only:</b>	<b>1,000 Baht</b>

*(excluding bank transfer fee)*

## Scholarship

Five grants will be offered to participants who follow the "Protein Expression and Purification" CU telecourse (#3000757). The deadline for the grant application is 15 May 2013. All registration fee for both course and workshop will be waived. Air Ticket fee will also be paid for granted participants from Laos, Myanmar, and Vietnam.



## CHULA INTERNATIONAL WORKSHOP PEP 2013



### PROTEIN EXPRESSION & PURIFICATION STRATEGIES

#### FOR MORE INFORMATION PLEASE CONTACT:

Graduate Division, Faculty of Medicine,  
Chulalongkorn University,  
Rama 4 Road, Pathumwan, Bangkok, 10330  
Phone: **66-2-256-4475, 66-2-256-4455**  
Email: [smedsuk@md.chula.ac.th](mailto:smedsuk@md.chula.ac.th)  
[mdresearch@gmail.com](mailto:mdresearch@gmail.com)

#### FOR PROGRAM DETAILS AND APPLICATION PROCESS PLEASE VISIT:

<http://grad.md.chula.ac.th/english/>  
<http://www.md.chula.ac.th/english/>

To download Scholarship application form for  
the Protein Expression and Purification#3000757

<http://grad.md.chula.ac.th/english/>



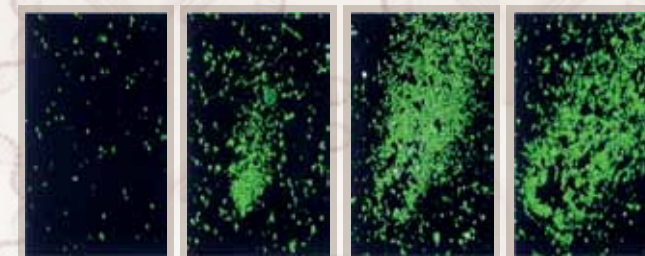
## Chula International Workshop



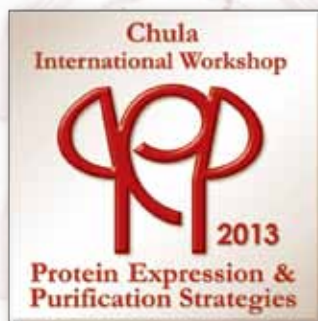
## Protein Expression & Purification Strategies

**Faculty of Medicine  
Chulalongkorn University  
Bangkok, Thailand**

**28 October - 1 November 2013**

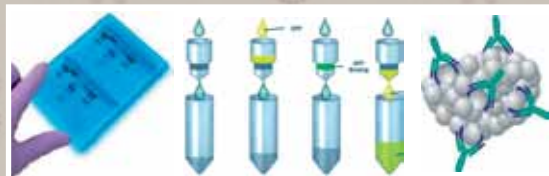


**2<sup>nd</sup> ANNOUNCEMENT**



## Program Description

Description of recombinant protein technologies, from the protein production to their applications in human health. This workshop will provide a solid understanding of specific topics through classroom presentation and laboratory work.



## Application Deadline

The registration will be closed when the number of applicants reaches max. of 50 for full workshop and 100 for lecture.

## Venue

This workshop will be held at Aor Por Ror Building, Faculty of Medicine, Chulalongkorn University.



# FINAL PROGRAM

## Scientific Program

### 28 Oct 2013

- 08.15-08.30 **Opening ceremony**
- 08.30-09.10 **Lecture 1: Design of protein expression construct: tips and tricks**
  - *Dr. Kanitha Patarakul*
- 09.15-09.55 **Lecture 2: Transient and stable mammalian expression systems**
  - *Dr. Alain Jacquet*

### 10.00-10.30 **Coffee Break**

- 10.30-11.10 **Lecture 3: Biochemical and immunological characterization of proteins**
  - *Dr. Arnd Petersen* (Borstel, Germany)
- 11.15-11.55 **Lecture 4: Purification of monoclonal antibodies**
  - *Dr. Tanapat Palaga* (Faculty of Science)

### 12.00-13.00 **Lunch Break**

- 13.00-13.40 **Lecture 5: Physico-chemical characterization of proteins**
  - *Dr. Moreno Galleni* (Liege, Belgium)
- 13.45-14.25 **Lecture 6: Stability testing of proteins**
  - *Dr. Alain Jacquet*

### 14.30-15.00 **Coffee break**

- 15.00-15.40 **Lecture 7: Protein labeling**
  - *Dr. Surapon Piboonpocanun* (Mahidol U)
- 15.45-16.25 **Lecture 8: Protein aggregation**
  - *Dr. Alain Jacquet*
- 16.30-17.00 **Questions/answers to the experts**
- 17.00 **Welcome Party**



### 29-30-31 Oct 2013

- 09.00-12.00 **Morning Lab Session**
- 12.00-13.00 **Lunch Break**
- 13.00-16.30 **Afternoon Lab Session**

### 30 Oct 2013

**Poster Session/selected abstract presentation part 1**

### 1 Nov 2013

- 09.00-12.00 **Conclusion, hint and tips**
- Poster Session/selected abstract presentation part 2**
- 12.00-13.00 **Lunch Break**
- 13.00-14.00 **Evaluation and closing ceremony**

## Four different Lab sessions

1. Expression of a recombinant protein in mammalian expression systems: importance of the plasmid backbone, leader sequence. Detection by immunofluorescence and Western blot
2. Antigen immobilization onto chromatographic matrix
3. Purification of a monoclonal antibody using protein A matrix
4. Purification of monoclonal antibody using immobilized antigen column. Detection by SDS-PAGE, Western blot, and gel filtration

## Abstract submission

Poster/oral presentation session are also scheduled. Please submit your abstract (max 300 words), in any field related to proteins and/or any topics from the workshop, before 30 September 2013. Some abstracts will be selected for oral presentation. Other abstracts will be presented as posters.